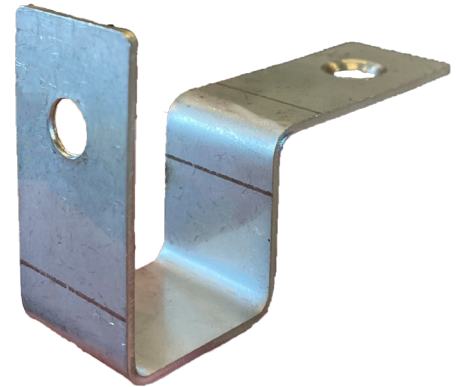




Metrotile Stainless Steel Photovoltaic Bracket

FOR RETRO FITTING SOLAR PANELS
TO A METROTILE ROOF SYSTEM



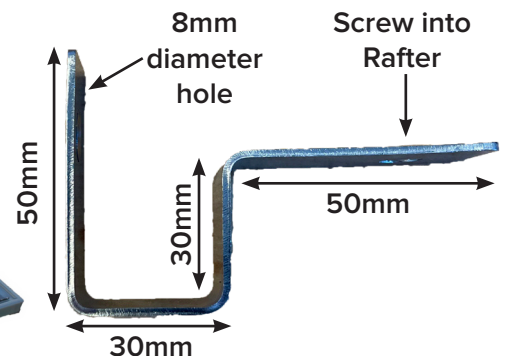
Incredibly durable 2mm thick stainless steel bracket enabling secure and easy installation of photovoltaic panels on a Metrotile roof system.



- Securely screwed into battens through to rafters, recommended every 600mm.
- Quantity of brackets required dependent on the installers recommendations.
- Can be fitted as low as a 15 degree roof pitch.
- Guarantee in-line with the whole solar installation.
- Compatible with many **Metrotile** tile profiles (*specialist brackets available for Shingle & Roman*).

For an alternative option to retro fitting PV panels, Metrotile have introduced a fully-integrated solar tile - the **eQube!**

This tile, pressed into Metrotile's **Qube** profile is an all-in-one system, making solar installation quicker and easier than ever.



For pricing & availability or if you require more information, contact the sales team on **01249 658514** or **sales@metrotile.co.uk**